

**2014**

***Mission statement:  
Family Connections,  
Inc. strives to increase  
the availability and  
accessibility of child  
care programs,  
promote recognition  
of child care issues,  
and encourage the  
development of  
quality child care  
services.***



**Annual**

**Report**



***“Unless  
someone like  
you cares a  
whole awful  
lot, nothing is  
going to get  
better. It’s  
not.”***

***~Dr. Seuss~***

## Vision Statement(s)

All children, regardless of economic status, religion, sex, race, or special need, receive high quality affordable child care.

All child care providers working in early learning, education, & care environments are treated with the respect & dignity they deserve by families and communities alike.

All parents seeking assistance, in child care, are educated on quality in child care environments and the resources available to their families.

Throughout 2014, Family Connections, Inc. continued to work with families, childcare personnel, and the community in the following areas:

- ~Professional Development/Early Care & Education Trainings~
- ~Technical Assistance and Consulting~
- ~Certification packets and assistance for starting a child care business~
- ~Information on Quality Child Care and community resources~
- ~Local child care data/information~

*2014 was another great year for early childhood programs throughout Wisconsin for:*

### **YoungStar: Wisconsin's Quality Rating and Improvement System.**

Family Connections, Inc. is joined with other agencies around the state (WI Department of Children & Families, Child Care Resource & Referral Agencies, the YoungStar Consortium Partners, Supporting Families Together Association, Wisconsin Early Childhood Association, and the Celebrate Children Foundation) to provide professional development and technical assistance to participating child care programs in our service area.

Over 350 child care personnel attended approximately 30 professional development trainings, offered by Family Connections, during 2014



In 2014, 98% of stakeholders reported high satisfaction when working with Family Connections



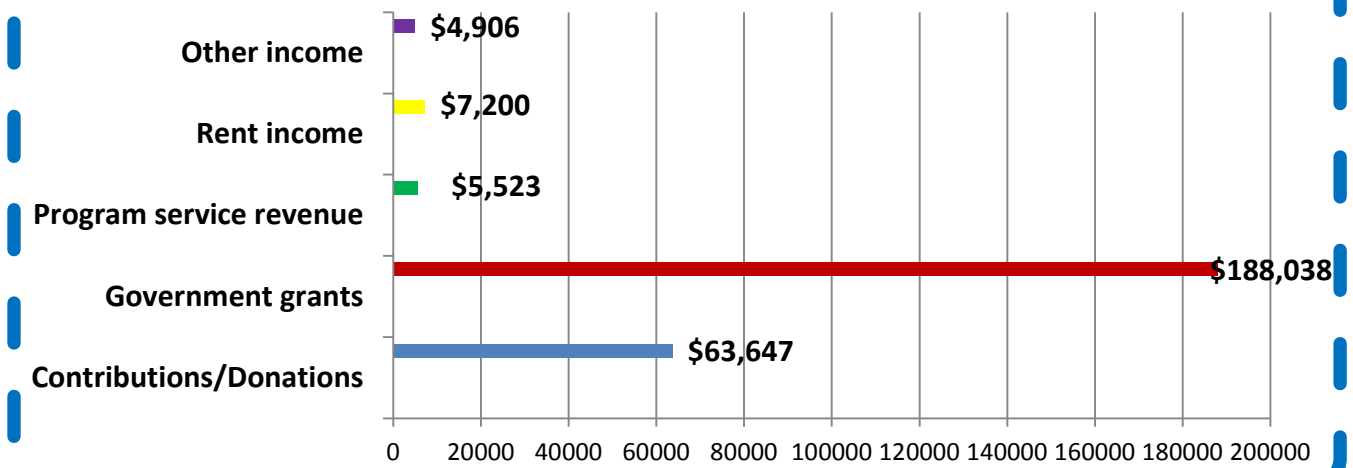
71 community based meetings were attended by Family Connections Staff members in 2014



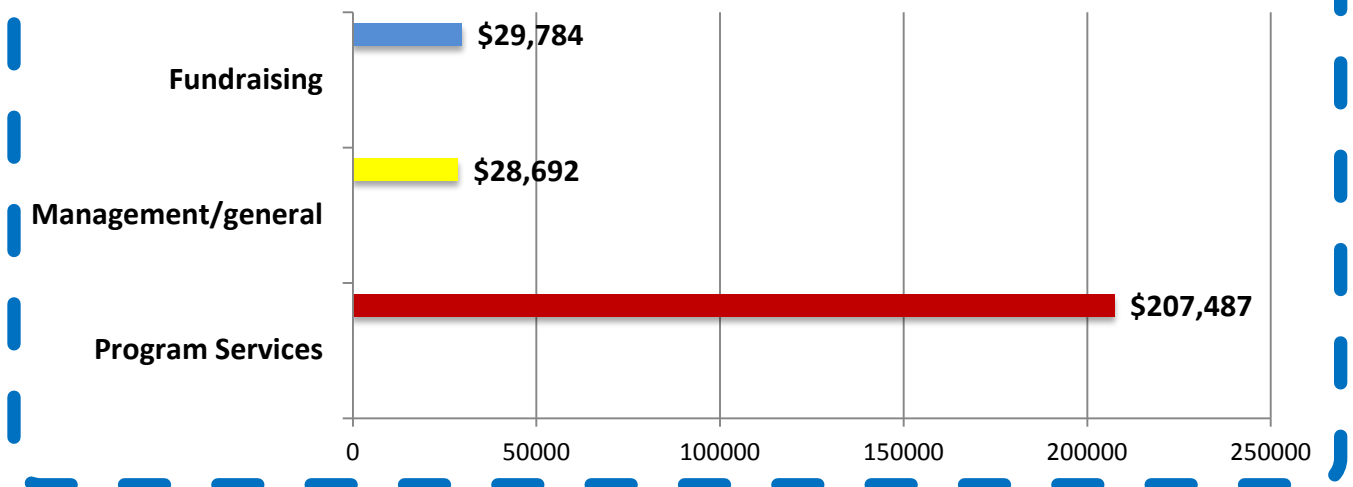
# Family Connections, Inc.

## Revenue and Expenses - 2014

### Revenue \$269,314



### Expenses \$265,954



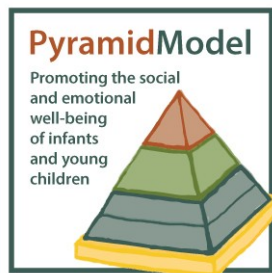
## TECHNICAL ASSISTANCE

Over **11,470 technical assistance contacts** (phone, mail, fax, email, and in-person) were made, by Family Connections staff, to child care providers, parents, and the surrounding communities in Sheboygan, Manitowoc & Fond du Lac Counties in 2014. There were also 250 technical assistance contacts to people and businesses outside of our service area.

Family Connections also offers, to providers, an early childhood education loan library which includes numerous themed bins for checkout: Rescue Heroes, Camping, Wooden Train set & blocks, Leaps & Bounds, Games Galore, Creation Station, Creepy Crawlers, Blossoming Baby, Farm/Wild/Zoo Animals, Dinosaurs, plus many others.

## TRAININGS FOR CHILD CARE PROVIDERS

Family Connections, offer providers customized trainings and assistance, such as curriculum alignment, child care business practices, and team building, for the providers' quality improvement plans.



### In 2014 Training topics included:

**YoungStar Overviews/updates**  
**Wisconsin Model Early Learning Standards**  
**Shaken Baby Syndrome Prevention Training**  
**Sudden Infant Death Prevention Training**  
**Strengthening Families: Protective Factors**  
**Early Childhood/Infant Toddler and**  
**Family Child Care Environmental Rating Scales**  
**WI Early Care & Education Physical Activity Training**  
**Child Outcomes Portfolio Development & Curriculum**  
**Early & Very Early Literacy Training**  
**Ages & Stages Questionnaire**  
**Early Developmental Screening**  
**Pyramid Model**  
**Developmentally Appropriate Practice**  
**Strengthening Hand-washing Practices**

### DID YOU KNOW?

Approximately **77,172** children, age birth to 4 years, are living in poverty in Wisconsin

Total number of children, under the age of 6, potentially needing child care in Wisconsin –  
**299,140**

**8,774** families (annually) receive child care referrals from the Child Care Resource & Referral agencies in the state of Wisconsin

Certification packets were given out to **21** potential providers in Sheboygan County in 2014

~From the Child Care Aware® Of America's 2014 State Fact Sheet Survey~

## **CONNECTIONS PROGRAM**

**The Connections Program** continues to provide some financial assistance to income eligible working families for their initial child care registration and weekly child care costs. This also includes individualized family care management, and supporting each family in their journey towards self-sufficiency.

In 2014, **32 families/63 children** had their registration/enrollment fee paid for the child care program they were attending. This fee is a one-time per year fee for residents of Sheboygan County.

Also in 2014, **37 Families/67 children** were supported through monthly child care payments made to their regulated child care provider. This includes individualized care management, social-emotional development, skill-building, and community resources.

Connections had a summer outing at **Bookworm Gardens**, in August. We also had two Family Fun Nights during the year: **Dog-Gone Fun**, featuring activities about Clifford-The Big Red Dog, and **Holiday Celebrations** with Santa as our special guest.



### **IN 2014:**

**72 providers, out of 126 – that returned their YoungStar renewals/contracts (with a 2, 3, 4 or 5 star rating) received Technical Assistance. This includes group, family & school-age providers in Sheboygan, Manitowoc & Fond du Lac Counties.**



## **Board of Directors**

**David Shoemaker**  
*President*

**Jan Adelman**  
*Vice-President*

**Karla Zahn**  
*Secretary*

**Linda Evraets**  
*Treasurer*

**Kate Miller**

**Nancy McAdams**

**Mary Lynne Donohue**

**Diane Fett**

**Kim Pudwell**

**Pam Kugi**



## **Family Connections, Inc. Staff Members**

**Matricia Patterson**  
*Executive Director*

**Colleen  
Steinbruecker**  
*Early Childhood  
Consultant*

**Terri Schultz**  
*Early Childhood  
Consultant*

**Jen Wentlandt**  
*Early Childhood  
Consultant*

**Susan Crisp**  
*Connections  
Coordinator*

**Deb Schreiner**  
*Resource Specialist*

**A SPECIAL thank you to our financial supporters in  
Sheboygan, Manitowoc & Fond du Lac Counties...**

~Wisconsin Department of Children & Families~

~Supporting Families Together Association~

~City of Sheboygan: Community Block Grant~

~Cedar Grove Area United Fund~

~The Greater Random Lake/Adell United Fund~

~First Congregational Church of Sheboygan~

~Kohler Company~

~West Foundation, Inc.~

~Bemis Manufacturing Company~

~United Way of Sheboygan County~

~United Way of Manitowoc County~

~Burkart/Heisdorf Insurance~

~Family Connections – Board Members~

~Mental Health Association – Sheboygan (for Team Blue Ribbon)~

**Also a BIG thank you to the following partners that  
provided training space and other support necessary for  
us to reach our outcomes...**

~Manitowoc Community Partnership for Children – Investing Early Coalition~

~Maternal Health Coalition of Sheboygan County~

~United Way of Sheboygan County~

~UW Manitowoc Extension Office~

~Silver Lake College~

~Lakeshore CAP~

~Fond du Lac Family YMCA~

~Moraine Park Technical College~

~Lakeshore Technical College~

~Fond du Lac SPROUT Partnership for Young Children Coalition~

~PARTNERS for Community Development – Volunteer Center of Sheboygan County~



We are proud to be a participating  
United Way Affiliated Agency in Sheboygan County



Please support your local United Way!  
Without the support of United Way, Family Connections would not  
have the impact we do in the communities we serve.

Family Connections is a proud member of Supporting Families  
Together Association, funded in part through the  
Wisconsin Department of Children & Families.



<http://supportingfamielstogether.org/>

Supporting Families Together Association's mission:  
To build systems and support quality care,  
resources and education to enrich the lives of children.

## **Family Connections, Inc.**

*Child Care Resource & Referral Agency*  
**2508 S. 8<sup>th</sup> Street, Sheboygan WI 53081**  
**(920) 457-1999 or 1-800-322-2046**

**Fax: (920) 451-0043**

[www.familyconnectionssc.org](http://www.familyconnectionssc.org)

***Serving Sheboygan, Manitowoc & Fond du Lac Counties***